

**Information on the availability of free and available capacities, capacity, places, as well as diagrams of engineering communications of the water supply system when providing services to the village of Dzhangala, Zhanagalinsky district, West Kazakhstan region (as of 01.10.2021).**

JSC "Intergas Central Asia" provides regulated water supply services to the village of Dzhangala, Zhanagalinsky district, West Kazakhstan region. At the same time, it ensures the extraction of water from the Pyatimarskoye reservoir and the supply through the water supply of the water supply organization GKP Kommunal. For this purpose, the water supply system includes the following equipment.

List of equipment for water management activities of DLPU branch of UMG "Uralsk"

№ п/п	Name and characteristics of the operated equipment	unit	number of equipment	commissioning year	note
1	2	3	4	5	6
Hydrogen					
1	Pipeline DN 300 mm, PN 6 kgf / cm <sup>2</sup> in the section from the Pyatimar water intake to the Dzhangalinsky LPU	km	30	1969	in work
Pontoon pumps					
2	Pump K-100-65-200, Flow rate 100 m <sup>3</sup> / h, head 65 m, 30 kW, n = 300 rpm	unit	2	2009	in reserve
3	Pump K-100-65-200, Flow rate 100 m <sup>3</sup> / h, head 65 m, 30 kW, n = 300 rpm	unit	2	2009	in reserve
Pump 1 lift					
4	Pump CNS-105/98, Flow rate 105 m <sup>3</sup> / h, head 85 m, 55 kW, n = 2837rpm	unit	1	2014	in work
5	Pump CNS-105/98, Flow rate 105 m <sup>3</sup> / h, head 85 m, 55 kW, n = 2837rpm	unit	1	2014	in reserve
6	Pump SADU, Flow rate 75 m <sup>3</sup> / h, head 85 m, 45 kW, n = 2837rpm	unit	1	1990	in reserve
7	Pump SADU, Flow rate 75 m <sup>3</sup> / h, head 85 m, 45 kW, n = 2837rpm	unit	1	1990	in reserve

Analysis of the water management system of the UMG "Uralsk", the village of Dzhangala, West Kazakhstan region

№	Volume in kind (m <sup>3</sup> ) per year				
1	Water intake capacity	Total consumption	Own consumption	To third-party consumers GKP Kommunal	The remainder of the reserve for the productivity of the intake structure
Total	1831200	205609	1864	203745	1625591

Diagram of a jumper to the water supply networks of the Dzhangala-GKP Kommunal compressor station

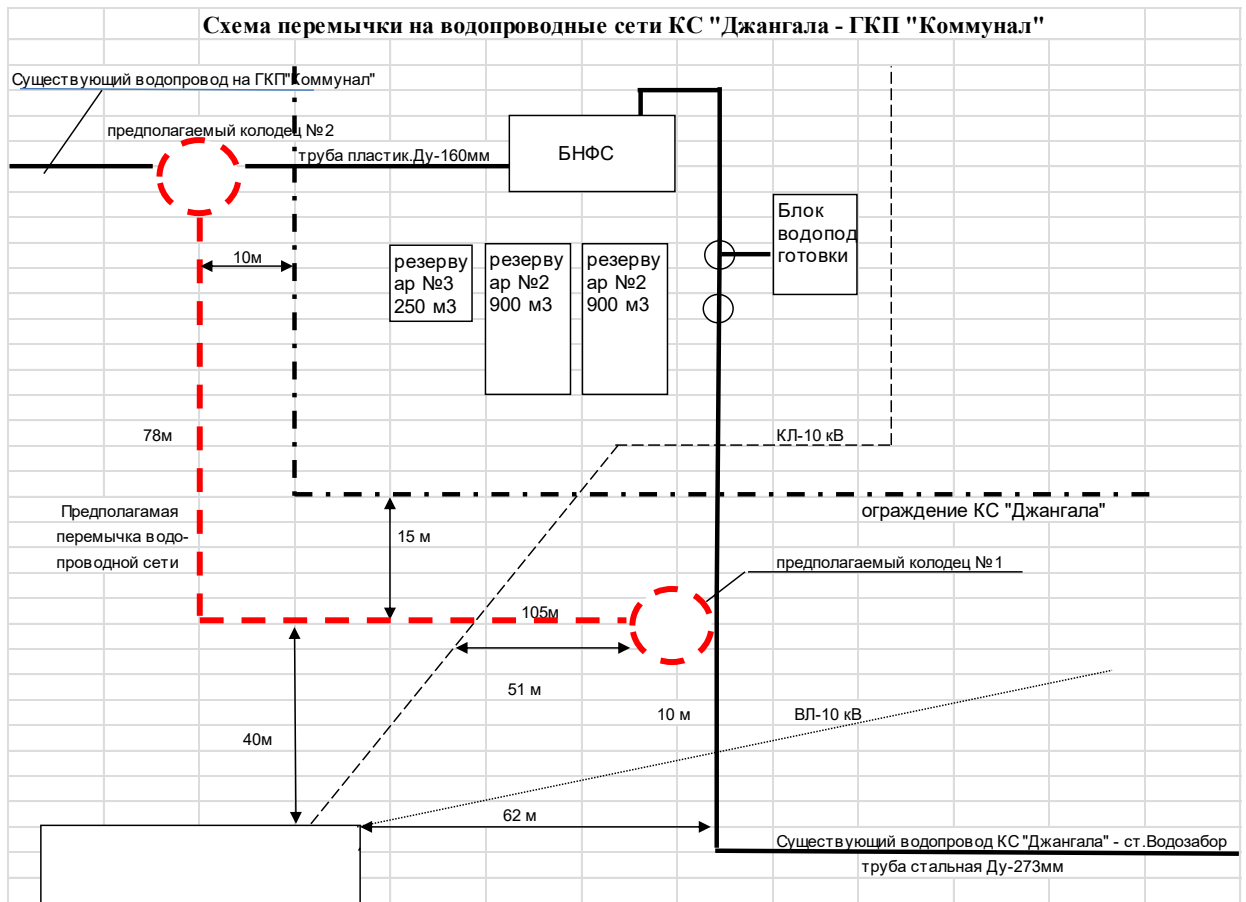
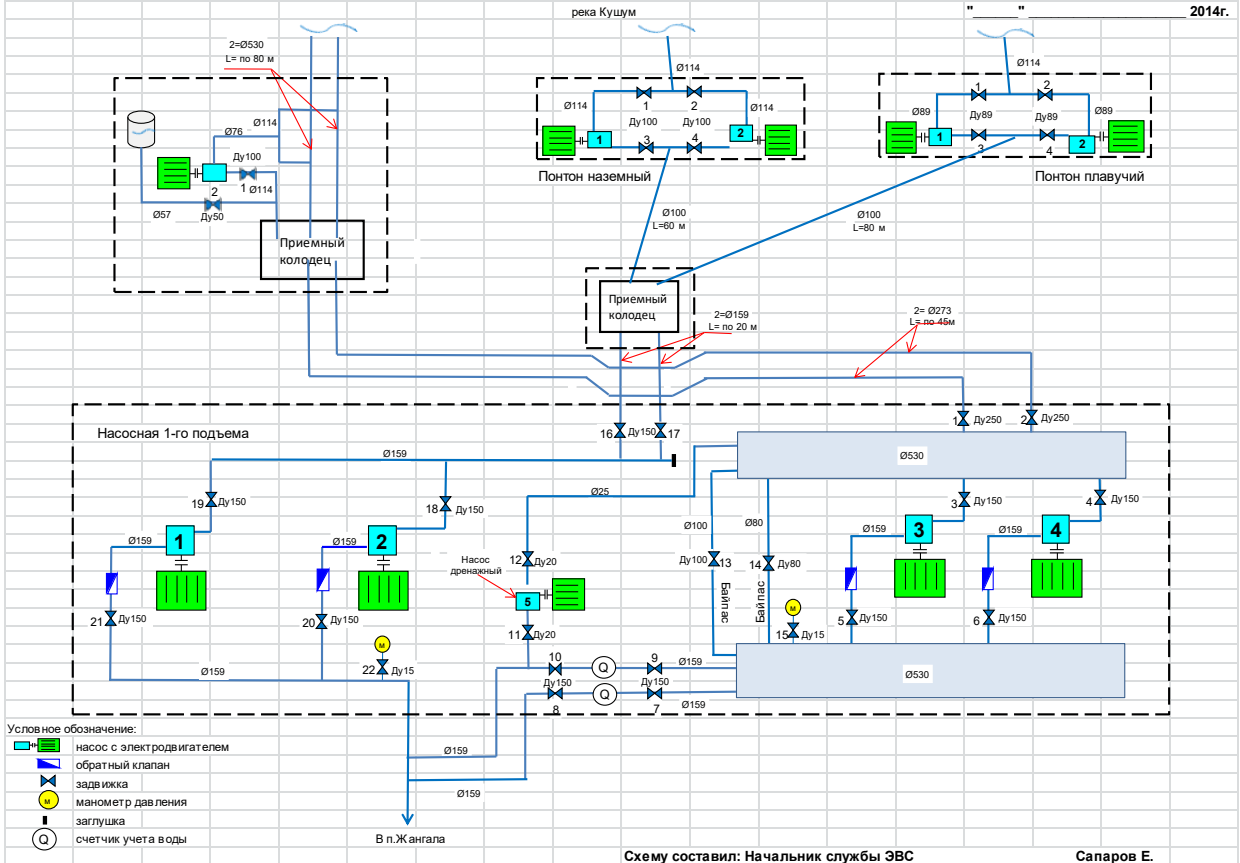


Схема обвязки насосной 1-го подъема ст. "Водозабор".

"Утверждаю"  
 Главный инженер Джангалинского ЛПУ  
 Назаров А.А.  
 2014г.



Схему составил: Начальник службы ЭВС

Сапаров Е.